



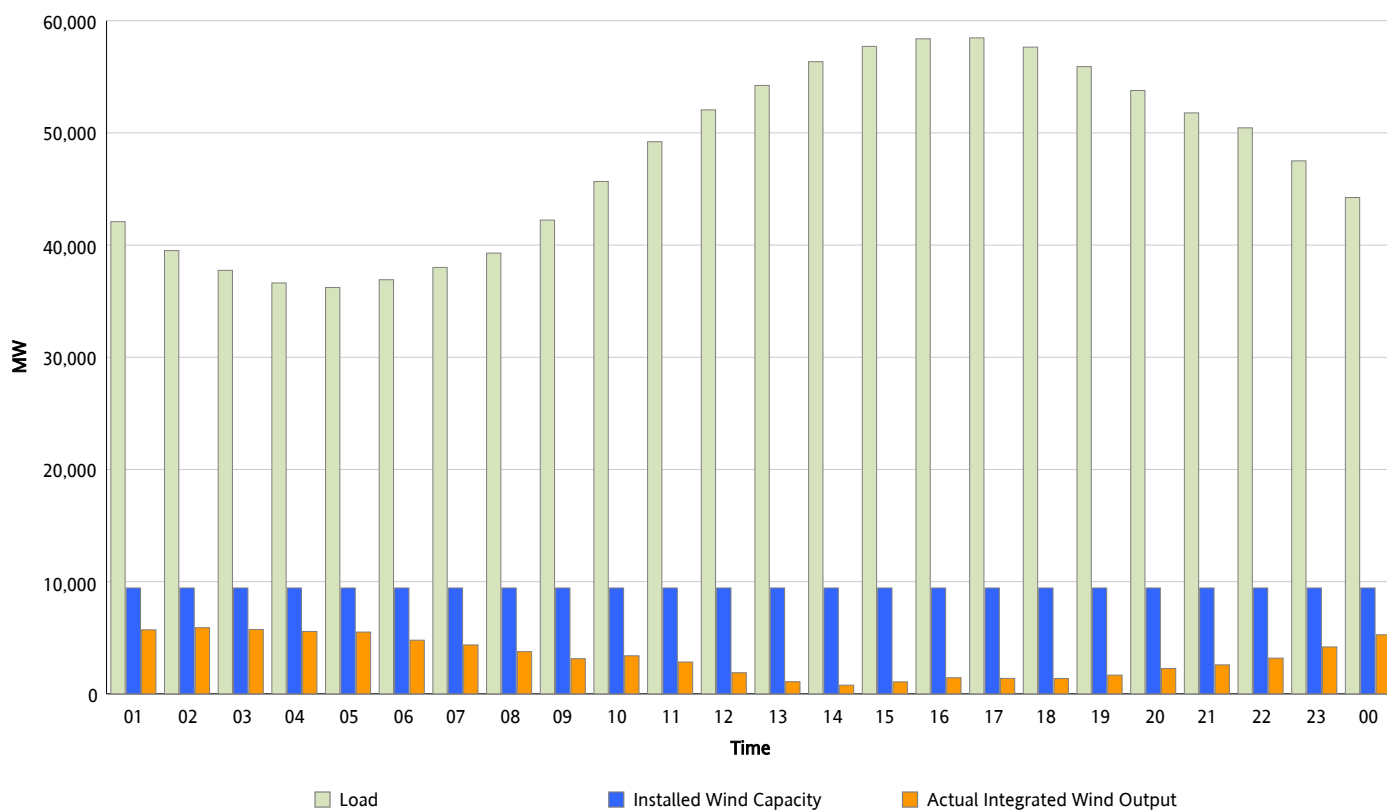
## ERCOT Grid Operations

### Wind Integration Report : 06/29/2012

Peak Load	58,468 MW
Load Peak Hour (HE)	17
Wind Over Peak	1,381 MW
Wind Record 06/19/12	8,368 MW
Max Wind Value*	6,024 MW
Wind Peak Time	01:08
Wind Integration %	14.98 %

#### Hourly Average Actual Load vs. Actual Wind Output

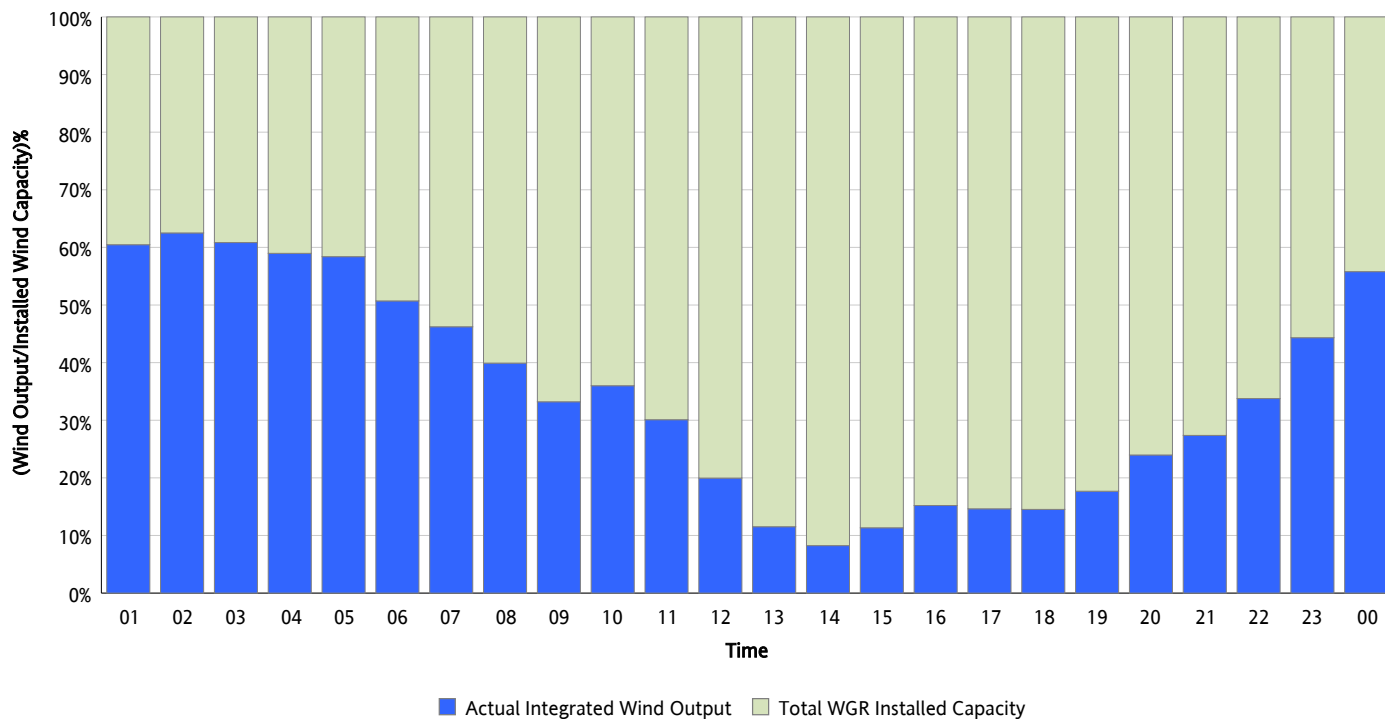
06/29/2012



\* Wind Record and Wind Max represent instantaneous values and the rest of the values are integrated over the hour

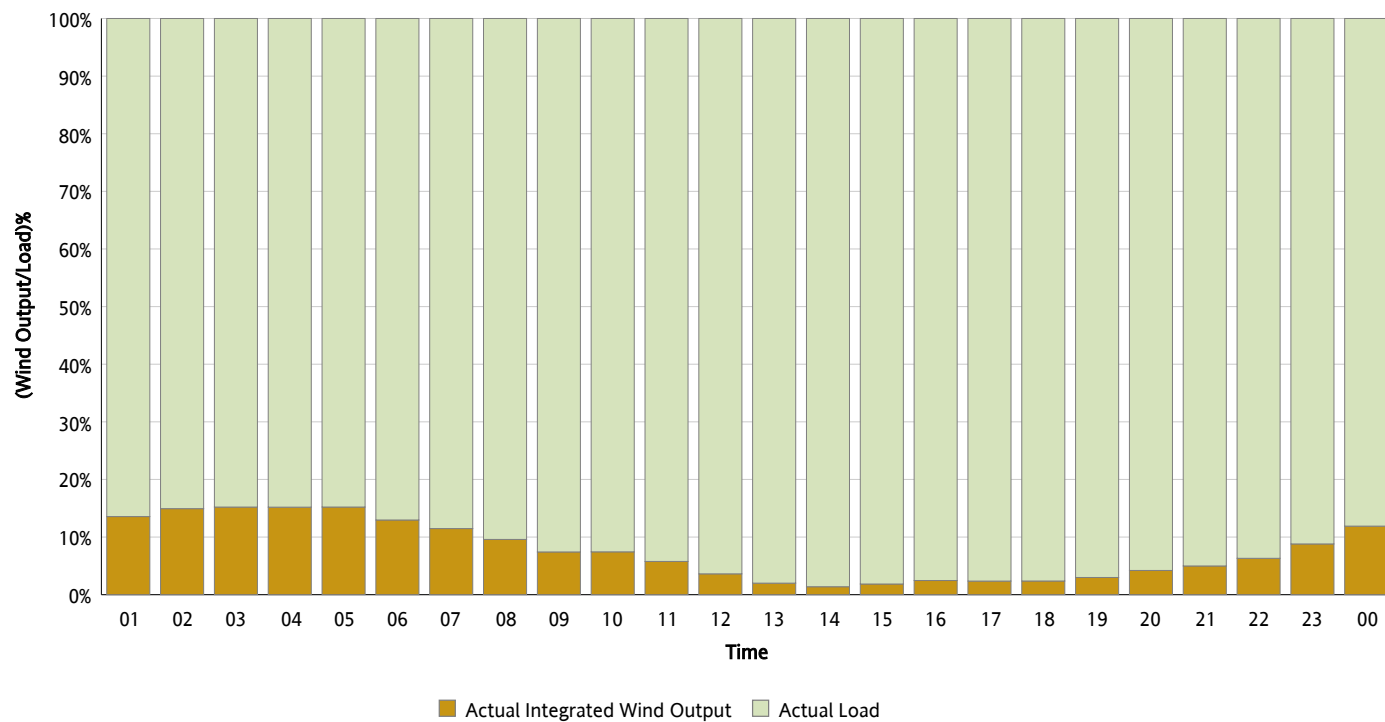
## Actual Wind Output as a Percentage of the Total Installed Wind Capacity

06/29/2012



## Actual Wind Output as a Percentage of the ERCOT Load

06/29/2012



## ERCOT Load vs. Actual Wind Output

06/22/2012 - 06/29/2012

